

2022 International Modern Slavery and
Human Trafficking Response Annual Report

GREATHER DEPTHS

A large, stylized graphic of blue waves with intricate, swirling patterns, filling the middle section of the page. The waves are rendered in various shades of blue, creating a sense of movement and depth.

*'But let justice roll on like a river,
righteousness like a never-failing stream!'*

Amos 5:24

INTERNATIONAL
SOCIAL JUSTICE
COMMISSION



CONTENTS

Foreword	3
Thank You Letter	3
2022 at a Glance	4
Core Values	5
Zonal Response Highlights	6
Africa Zone	6
Americas and Caribbean Zone	7
Europe Zone	8
South Asia Zone	9
SPEA Zone	10
Connect	11

GLOSSARY AND ABBREVIATIONS

MSHT Modern slavery and human trafficking



Prayer



Prevention



Protection



Partnership

MSHTR Modern slavery and human trafficking response



Participation



Prosecution



Proof



Policy

FOREWORD

Dear valued partners and friends,

The world as it is, is not the world as it should be.

We continue to live in a world where exploitation and harm are daily realities for the vulnerable in our communities.

We are most encouraged by the work of committed Salvationists to respond in appropriate ways to the challenges that are found within modern slavery and human trafficking (MSHT).

We have much to be hopeful for as we read of lives being transformed as God's Spirit works in and through us. So much to be grateful for. So much more to do – in the name of the One who loves us.

Ephesians 3:20!

Colonels Wendy and Ian Swan
*Directors, International
Social Justice Commission (ISJC)*

THANK YOU LETTER

Dear partners in justice,

It was an unforgettable year, marking significant progress in our response to MSHT. Since The Salvation Army's inception in 1865, we've seen the power of God using people in our global movement to bring real-life glimpses of the Kingdom of God around the world, and this year was no exception.

Our theme is 'Greater Depths'. We felt an invitation by God to go deeper in our MSHT responses, not simply focusing on increasing numbers but on the quality of our responses. We moved through the year focused on honouring the 'imago dei,' the image of God in every person we support and serve alongside.

I'm grateful for our common thread that binds us in our journey together – a deep desire to see

**'WE'VE SEEN THE POWER OF GOD
USING PEOPLE IN OUR GLOBAL
MOVEMENT TO BRING REAL-LIFE
GLIMPSES OF THE KINGDOM OF
GOD AROUND THE WORLD'**

transformation happening across communities everywhere.

May we celebrate the impact made together in 2022. Thank you for taking this journey with us.

Priscilla Santos
*International Coordinator for Modern Slavery and
Human Trafficking Response, ISJC*

2022 AT A GLANCE

The Salvation Army responds to God's leading in combatting MSHT across 133 countries.

The Salvation Army is tackling the MSHT crisis with the support of local and international officers (ministers), soldiers (church members), survivors, employees, volunteers and friends.

TERRITORIAL FEEDBACK



active in **prayer**: Responses are rooted in deep spiritual foundations.



active in **participation**: Equipping Salvation Army people and ministry units to participate in responding to MSHT.



active in **prevention**: Raising awareness and addressing MSHT root causes in local communities is a vital way to decrease vulnerability and strengthen well-being.



active in **prosecution**: Supporting survivors as they access legal assistance and support restorative justice efforts.



active in **protection**: Walking alongside and serving survivors as they regain their physical, mental, emotional, relational and spiritual health.



active in **proof**: Ensuring responses both contribute to and are received from research and informed by evidence-based practices.



active in **partnership**: Partnering with a global network to respond to MSHT.



active in **policy**: Creating internal policies and advocating for external policies that reduce MSHT and its demand in the communities in which The Salvation Army is active.

CORE VALUES

The Salvation Army launched its core values describing how we desire to respond to MSHT:



LOVING AND COMPASSIONATE

Inspired by Jesus, The Salvation Army aims to embody deep love and compassion across our responses and in our relationships with one another.



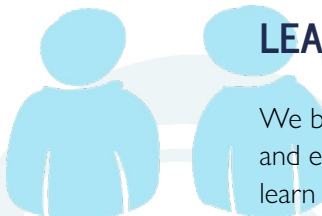
SURVIVOR-CENTRED

The strengths, needs, desires and voices of survivors should be at the forefront and centre of The Salvation Army's responses.



COORDINATED AND INTEGRATED

As MSHT is a multidisciplinary issue, an interconnected and collective response is required throughout The Salvation Army.



LEARNING TOGETHER

We believe all people are made in the image of God and equal in value. With this in mind – we listen and learn from those we serve and work alongside.



LOCALLY LED

The Salvation Army acknowledges local communities hold the best solutions and embrace being led by solutions created locally.

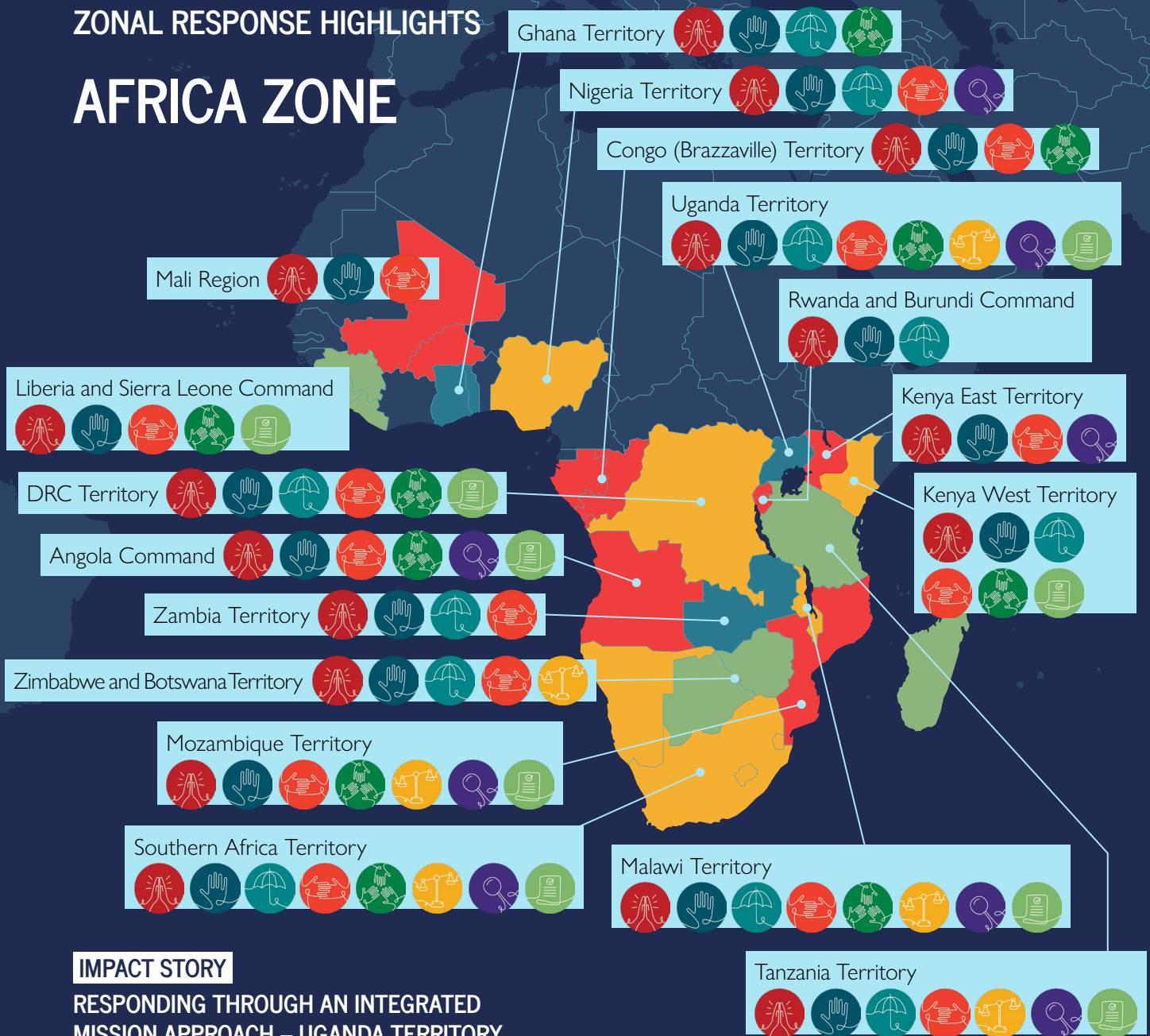


INCLUSIVE

The Salvation Army aims to create a culture of belonging where deep participation of Salvation Army ministry units and personnel is shaping and informing our practices and responses.

ZONAL RESPONSE HIGHLIGHTS

AFRICA ZONE



IMPACT STORY

RESPONDING THROUGH AN INTEGRATED MISSION APPROACH – UGANDA TERRITORY

The Uganda Territory is responding to MSHT holistically by working together to maximise impact. The territory’s MSHT Task Force is made up of representatives from territorial and divisional women’s ministries, community development, youth, commands, child protection and the officer training college – embodying an integrated mission approach to leverage strengths.

The MSHT project under the Women’s Ministries department supports and journeys with survivors located in different countries who need to return to and reintegrate within Uganda.

While the anti-trafficking project personnel organise the practical support together with partners,

Women’s Ministries officers are responding with social and emotional support to ensure long-term thriving once survivors are returned to Uganda.

The training on MSHT in the territory is inclusive of all departments to ensure that knowledge is shared, transferred and jointly developed.



ZONAL RESPONSE HIGHLIGHTS

AMERICAS AND CARIBBEAN ZONE

IMPACT STORY

EXPANDING SAFE PASSAGE FOR HIGH RISK MIGRATION – LATIN AMERICA NORTH TERRITORY

The constant exodus of refugees in search of a better and safer life has become a significant pathway towards people's vulnerability to MSHT. The crisis in Venezuela of its people fleeing on foot throughout South and Central America to escape violence, insecurity and poor livelihoods leaves many of the Venezuelan refugees at constant physical risk and vulnerable to falling into the hands of human traffickers.

In response to these migration concerns, the Latin America North Territory, made up of 10 countries, has adopted an inclusive response where it leverages the strengths of and locations where The Salvation Army is present to create a safe passage for the high-risk migration routes refugees find themselves in.

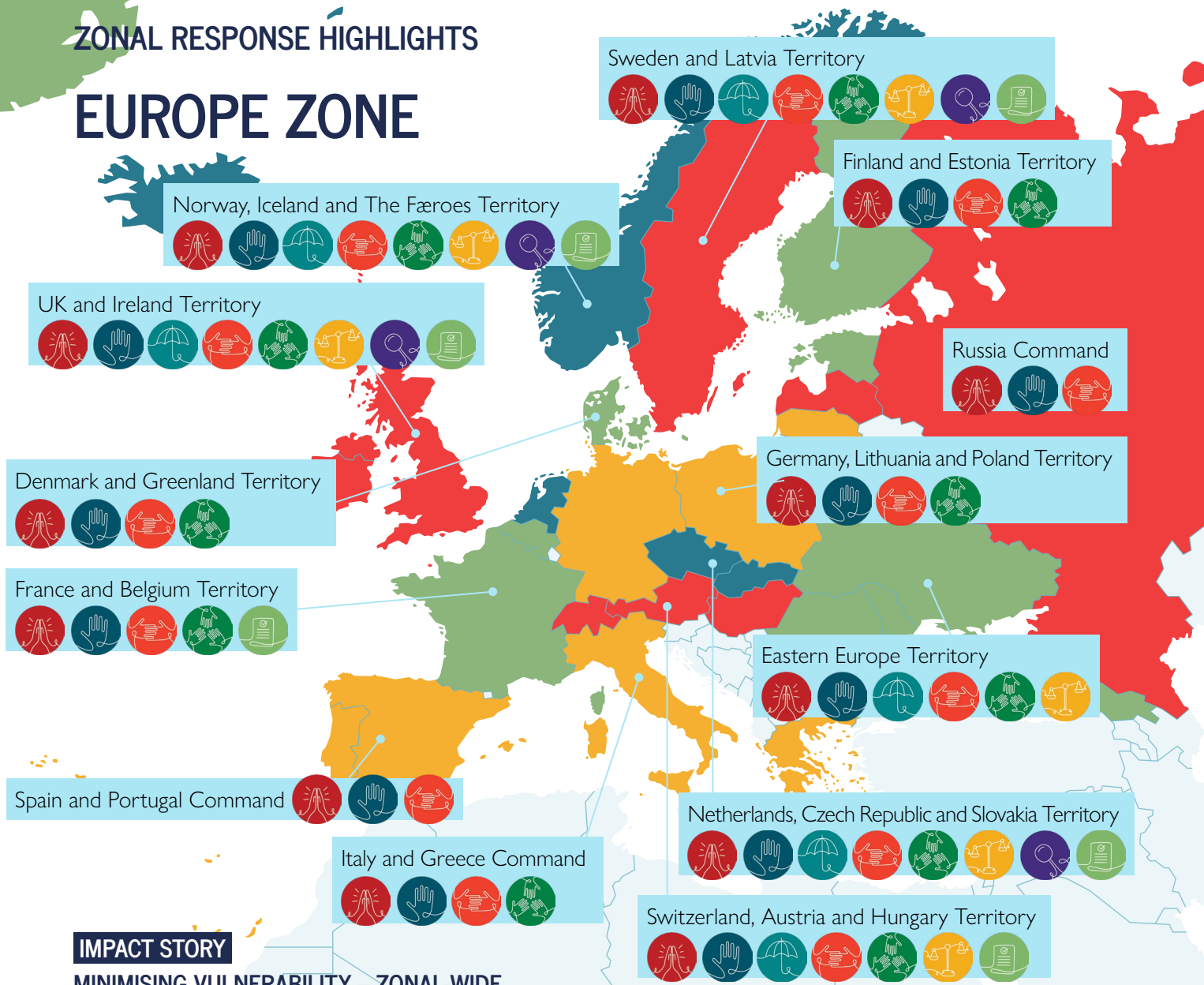
The territory's community outreach efforts focus on protecting and safeguarding Venezuelan refugees on their dangerous journey.

The territory has responded by raising awareness and providing education on how to stay safe throughout the journey. The territory also networks with its institutions and corps across its countries to offer support services, such as housing, meals, medical services and pastoral care as refugees are in transit.



ZONAL RESPONSE HIGHLIGHTS

EUROPE ZONE



IMPACT STORY

MINIMISING VULNERABILITY – ZONAL-WIDE RESPONSE TO THE UKRAINIAN REFUGEE CRISIS

Countries across the Europe Zone have been at the forefront and actively responding to the ongoing Ukrainian refugee crisis to minimise vulnerability to prevent exploitation. A number of support strategies exist across the zone:

Outreach and Awareness Raising: Salvation Army responders have developed and printed leaflets in English, Ukrainian, Russian and Polish. Shared throughout border points and strategic stations, the leaflets include

awareness messages, helpful tips for safeguarding and local contact information for urgent support.

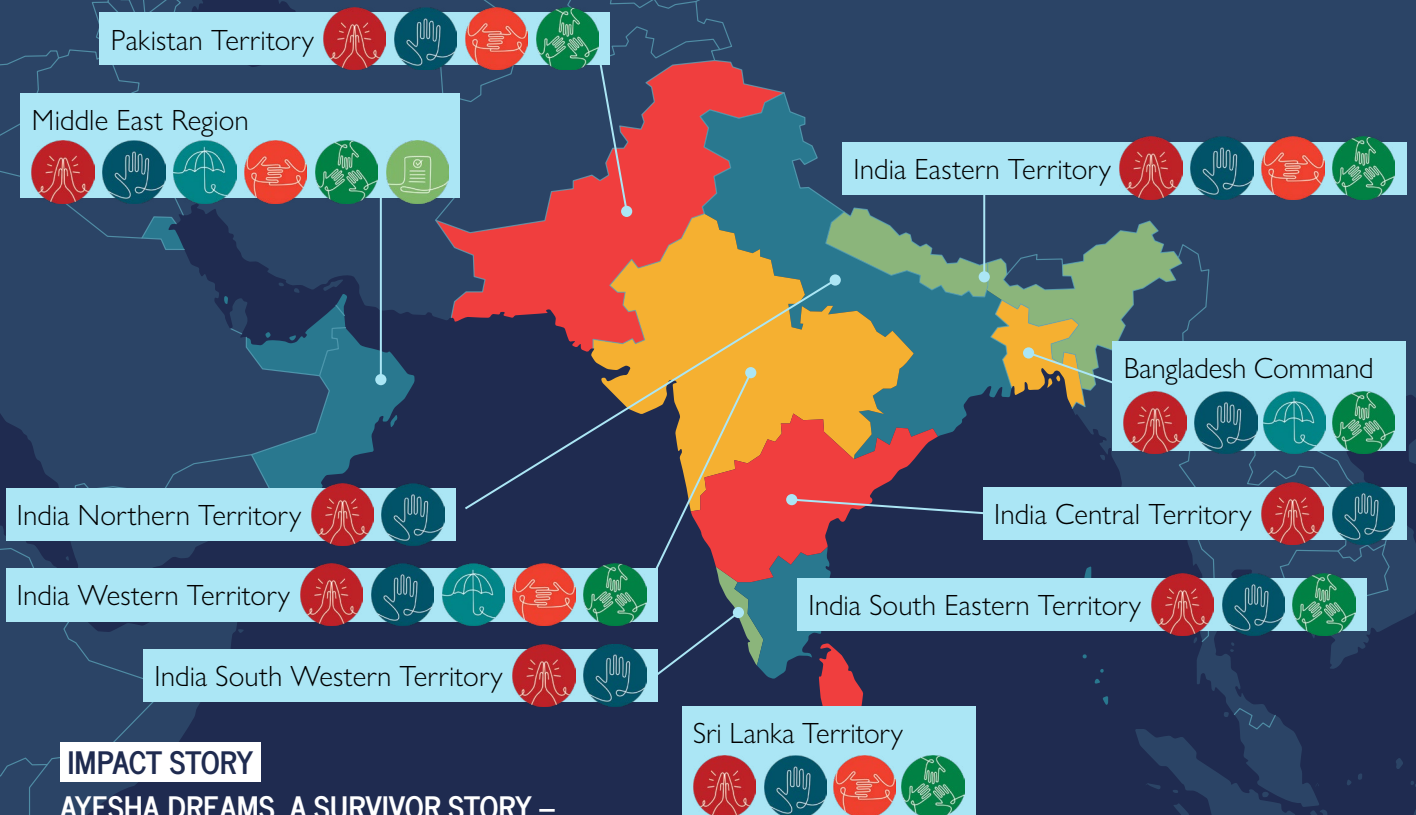
Partnerships: Development of partnerships with local governments, police and organisations have been established to strengthen the integration of refugees and creation of awareness and safeguarding for MSHT.

Safe Housing: The practice of providing 'home accommodation' to refugees with local families is a unique approach in response to the current concerns of increased numbers of refugees being lured and tricked into exploitation. This is an indicator of the call for an incarnational ministry, to 'be with', to experience life and grace with one another in the context of conflict and war.



ZONAL RESPONSE HIGHLIGHTS

SOUTH ASIA ZONE



IMPACT STORY

AYESHA DREAMS, A SURVIVOR STORY – BANGLADESH COMMAND

In its response to MSHT, Bangladesh Command demonstrates the significance of ‘stepping out’ of the buildings and being with the communities. In one of its regular visits to a local brothel, The Salvation Army team connected with a mother and daughter who were involved in commercial sexual exploitation to sustain their family’s livelihood and financially address significant health issues. The team’s connection with this family was a turning point for the daughter, Ayesha*, who felt safe to begin to dream of what life might look like away from the brothel.

Through various conversations with The Salvation Army team, Ayesha found herself dreaming of developing her natural skills and talent and continuing her education to become a beautician. Through the support of The Salvation Army, Ayesha and her family were able to move out of the brothel and she began her studies to become a beautician. Despite her mother experiencing significant health issues, Ayesha completed her studies and passed her exam. Soon after she found a job in a hair parlour where

she experiences dignified work, showcases her developed skills and provides for her family. Her next dream is to become an honest police officer and she is already preparing for this.

Ayesha and her family have experienced deep transformation towards a path of healing, and have hope for a better future away from life in the brothels.

Through its outreach programmes, The Salvation Army empowers people, families and communities, but also instils faith and stirs up dreams, passions and vision that communities and individuals hold.

**name has been changed*



ZONAL RESPONSE HIGHLIGHTS

SOUTH PACIFIC AND EAST ASIA ZONE

Korea Territory      

Hong Kong and Macau Command       

Japan Territory 

Taiwan Region 

Singapore, Malaysia and Myanmar Territory       

The Philippines Territory     

Indonesia Territory     

Papua New Guinea and Solomon Islands Territory     

IMPACT STORY

FIRST EVER PILOT PROGRAMME PROMOTES SURVIVOR ENGAGEMENT AND INCLUSION IN GOVERNMENT – AUSTRALIA TERRITORY

Through its Lived Experience Engagement Program (LEEP), The Salvation Army in Australia is piloting and facilitating the first ever Survivor Advisory Council for the Australian Government.

LEEP is centred around engaging and including survivors to offer their expertise and lived experience to strengthen the government's national approach to MSHT response and inform policy changes.

The team of five survivors who make up the first Survivor Advisory Council participated in the National Roundtable on Human Trafficking and Slavery where key priorities in the sector were identified and created together. The key priorities identified were prevention, identification and support for victims and their hopes for survivor leadership in the sector.

The Salvation Army continues to partner with the government to learn from this pilot to ensure survivor leadership is part of the foundation for responding to MSHT.

Australia Territory        

New Zealand, Fiji, Tonga and Samoa Territory      



CONNECT

www.salvationarmy.org/ISJC

 [SalvationArmyISJC](#)

 [SalvationArmyISJC](#)

 [SalvArmyISJC](#)



